



KANSAS GEOLOGICAL SOCIETY

BULLETIN

Volume 96 Number 3

May – June 2021

Established 1925

IN THIS ISSUE

KGS Board Minutes February and March 2021 pages 16-20

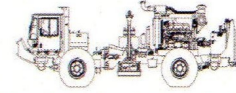
1996 KGS Chase Field Trip Remembered pages 12-13



Your 1/8 page ad here

Use Your KGS Library
For All Your Printing Needs

Old photos?
Old documents?
We can scan them for you!



*Proudly Celebrating 25+ Years
Acquiring Seismic Data Throughout the
Continental United States*

WICHITA

Nicolle Jausel
(316) 636-5552

Nicolle@parangoneo.com

DENVER

Kim Nordberg
(303) 888-8885

Knordberg@parangoneo.com

HOUSTON

Brent Propst
(832) 643-5158

Bpropst@parangoneo.com

OKLAHOMA CITY

Joe Broussard
(405) 213-9859

Jbroussard@parangoneo.com

website: www.parangoneo.com

Robert F. Walters Digital Library

The most complete source for Kansas data

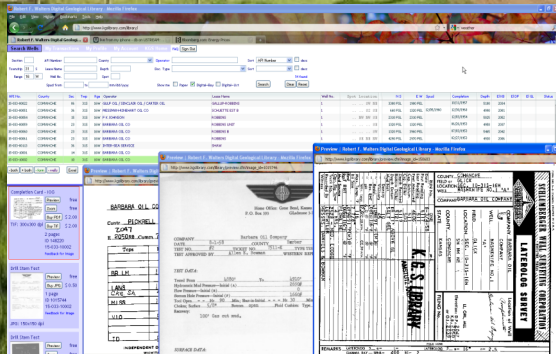
Database updated nightly

Day or Night

You can get to the data as you need it

www.kgslibrary.com

To Join: call 316-265-8676



**We Invite You
To join**

*Kansas
Geological
Foundation*

*\$50.00 membership is
tax deductible*

Call 316-265-8676

*Or send checks to:
Kansas Geological Foundation
212 N. Market, Ste. 100
Wichita, KS 67202*

Table of Contents

Features:	KGS Board Minutes from February and March 2021	pages 16-20
	1996 KGS Chase Field Trip Remembered	pages 12-13

KGS Events: No events scheduled

Departments & Columns:

KGS Tech Talks	4
President's Letter	7
Advertiser's Directory	8
KGS Board Minutes	16-20
In Memoriam	20
Professional Directory	21
Kansas Geological Foundation Cornerstone and KGF News	23-25
Kansas Geological Foundation Memorials	26-28
Exploration Highlights	30-31

ON THE COVER:

Death Valley Salt Pan at Sunrise

Photo by Marli Miller

CALL FOR PAPERS

The Kansas Geological Society Bulletin, which is published bimonthly in electronic format, seeks short papers dealing with any aspect of Kansas geology, including petroleum geology, studies of producing oil or gas fields, and outcrop or conceptual studies. Maximum length of papers is 6 pages as they appear in the Bulletin, including text, references, figures and/or tables, and figure/table captions. Inquiries regarding manuscripts should be sent to manager@kgslibrary.com or mailed to 212 N. Market, Ste. 100, Wichita, KS 67202. Specific guidelines for manuscript submission appear in each issue of the Bulletin, which can also be accessed on-line at the Kansas Geological Society web site at <http://www.kgslibrary.com>

SOCIETY Technical Meetings

All Technical Meetings will be on Zoom

- May 5 - Liz Cornejo, Constantine Metals- “Geologic Hazards Haines, Alaska Area”
- May 26 - Dr. Lee Krystinik, Geologist, and Tara Benda, Pres. TGS, General Chair AAPG MCS Convention
- June 2 - Dr. David Newell, KS Geological Survey - TBA
- June 17 - Dr. Stephen Oberney, KS Geological Survey - “A Modern Stratigraphic Analysis of Basins and Arches Region of Eastern Kansas”
- June 30 - Dr. Molly Turko, Oklahoma University, “Structural Analysis of the Wichita Uplift and Structures in the Southeast Anadarko Basin, Southern Oklahoma”

Please remember to check the website for the most up to date information on Technical Talks
<http://www.kgslibrary.com/techtalks.cfm>

*Tech Talks are held at Landmark Square
212 N. Market—4th floor
In the Wisdom Center*



Note: For those geologists who need 30 professional development hours (pdh) to renew their licenses, there will be a sign-in sheet at each presentation and also a certificate of attendance.

KANSAS GEOLOGICAL SOCIETY



BOARD OF DIRECTORS

PRESIDENT

Brian Fisher

PRESIDENT-ELECT

Roger Martin

SECRETARY

Garet Dinkel

TREASURER

Tom Dudgeon

DIRECTORS

John Hastings

Preston Doll

Tim Lauer

ADVISORS

Doug Louis

Tyler Sanders

COMMITTEE CHAIRMEN

Advertising

Kent Scribner

Advisory

Annual Banquet

Doug Davis

Bulletin

Wesley Hansen

Continuing Education

Distinguished Awards

Wesley Hansen

Environmental

Kent Matson

Field Trip

Jerry Honas

Fishing Tournament

Future Plans

Tyler Sanders

Golf

Rob Patton

New Building

Tyler Sanders

Historian

Larry Skelton

Library

Ted Jochems

Membership

Larry Friend

Nomenclature

John H. Morrison, III

Picnic

Beth Isern

Public Relations

Shooting Tournament

Larry Richardson

Technical Programs

Doug Davis

Technical Committee

Ryan Dixon

Finance Committee

Tim Hellman, Chairman

Members: Rocky Milford, Chuck Brewer, David Doyel, and Tom Funk

BULLETIN STAFF

EDITOR

Wes Hansen

(316) 772-6188

ADVERTISING

Kent Scribner

Stelbar Oil Corp.

(316) 264-8378

MEMORIALS

Wesley Hansen

EXPLORATION HIGHLIGHTS

John H. Morrison, III

Independent O&G

(316) 263-8281

STATE SURVEY

KS Geological Survey

(785) 864-3965

SOCIETY NEWS

KGS Library

(316) 265-8676

MANAGER

Wes Hansen (part time)

(316) 265-8676

K.G.S. LIBRARY

PHONE 316-265-8676 FAX 316-265-1013

email: frontdesk@kgslibrary.com or

Web: www.kgslibrary.com

A.A.P.G. DELEGATES

Douglas Davis
2021

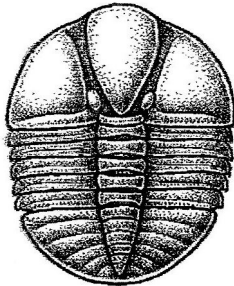
Wesley Hansen
2021

The KGS *Bulletin* is published bi-monthly by the Kansas Geological Society, with offices at 212 North Market, Wichita, Kansas 67202 Copyright 2020, The Kansas Geological Society. The purpose of the *Bulletin* is to keep members informed of the activities of the Society and to encourage the exchange and dissemination of technical information related to the Geological profession. Subscription to the *Bulletin* is by membership in the Kansas Geological Society. Limited permission is hereby given by the KGS to photocopy any material appearing in the *KGS BULLETIN* for the non-commercial purpose of scientific or educational advancement. The KGS, a scientific society, neither adopts nor supports positions of advocacy, we provide this and other forums for the presentation of diverse opinions and positions. Opinions presented in these publications do not reflect official positions of the Society.



Nine Trucks Serving
Kansas—Colorado—Texas—Nebraska—Illinois

DST's
Back Pressure testing (G1 & G2)
Slick line services using the same Weatherford
Electronic Pressure Gauges used on DST's



1-800-728-5369

FAX 1-785-625-5620

www.trilobitetesting.com
trilobite@eaglecom.net

SHOPS LOCATED IN:

Hays, KS
Scott City, KS
Pratt, KS
Oberlin, KS

CAN YOU NAME THE CRITTER?

Sponsored by Trilobite Testing, Inc.

Is your paleo up to date?

If you know the name of the trilobite,
submit your guess via e-mail to
manager@kgslibrary.com

Remember that *Trilobite Testing* is
sponsoring your efforts, so be sure to thank
Paul Simpson the next time you see him.

CONGRATULATIONS!!

**Randy Lilak correctly identified
The last one as: Harpides**

**Bulletin committee members and PhD's in
Paleontology are prohibited from entering.**



Kansas Geological Society (KGS) Medallion for Scientific Distinction and Excellence

The Kansas Geological Society (KGS) Medallion for Scientific Distinction and Excellence may be given annually for peer-recognized, sustained significant scientific contributions to all facets of applied Kansas geology, including work either in Kansas or in surrounding states if the latter contributions pertain directly and significantly to Kansas geology. No more than one award may be given each year, an award does not have to be given every year, and members of the KGS Awards Committee that handle nominations for this award cannot nominate themselves for this award. The candidates need not be active KGS members, and they must be living at the time of selection. The primary consideration in the selection of a candidate shall be his or her sustained, published, significant contributions to any facet of Kansas geology. Contributions may be varied in form such as development of geologic concepts, advancement in discovery thinking, and recognized leadership in exploration concepts. Oral and/or written publications in peer-reviewed geological venues is a requisite criterion for any candidate for this award. The name of a candidate shall be presented by the Awards Committee to the KGS Board of Directors for their approval. Once approved, the recipient shall be presented an appropriate award in the form of a medallion or plaque recommended by the Awards Committee and approved by the Board of Directors at the annual business meeting of the society. This is a new award given by the KGS for distinction and achievement in Geological research in Kansas.

Awards Committee members are Sal Mazzullo, Mike Dealy and Alfred James.

President's Letter

Greetings fellow geologists and members of the Kansas Geological Society,

As I write this letter - world oil prices are still hovering around the \$60 to \$61 dollar price. I still expect better prices along with increase of drilling and exploration activity are just around the corner for both the world and for the Kansas oil patch. I am still looking ahead for a \$65.00 world oil price by the middle of this year. According to recent information seen in the Independent Oil and Gas Service published by John Morrison, numbers of drilling rigs and new well locations have increased dramatically since the first of the year.



We are looking to move out of our present space by the end of this year and purchase a new building. There will be much more to say about this matter at a later time.

As of the end of March, the KGS library is still losing money, but the gap between the overhead expenses and monthly revenue is getting significantly smaller. Our Library Manager Wes Hansen, along with the KGS Board, is actively looking into different options to reduce current and future monthly operational expenses. One step we are implementing immediately is a stricter adherence to receiving payment for past-due invoices. Starting all Library members will be expected to pay their invoices within 60 days of the invoice date. Failure to pay that bill within 60 days will result in a suspension of your ability to be billed for subsequent work from or in the Library. Failure to pay that bill within 90 days will result in a suspension of your Library privileges entirely. While this is not a new policy, we understand that this is a departure from our recent, more relaxed attitude towards outstanding invoices. Anyone who is having difficulty paying their bill – either in part or in full – should talk to the KGS Manager or to the current KGS President to discuss a payment plan. We have had some member accounts who have been stretched out significant bills out to as long as 2 ½ years, this is not acceptable since I have previously mentioned before that the library is losing money. The library pays all its bills and financial monthly obligations in a timely fashion. Old debt is still debt owed.

Also, the KGS policies for access to the Walters Digital Library (WDL) are also being discussed by the Board. As you are aware, the current policy is that only the individual who signed up for the WDL is the person allowed to use it that account from that login. This topic is also covered by the annual user agreement. The WDL is it not a company account and the sharing of a password is not allowed. There will more information concerning this issue in a future presidential newsletter and/or communication from the Library Manager. It has recently come to my attention that there may be some misunderstandings regarding who can be billed for work completed through the Library. It is long standing KGS Library policy that work can only be billed to individuals that are Society members or to companies with current employees that are Society members that are doing the work. Any work done by non-members, either for themselves or on behalf of companies that are also non-members, must be paid in full immediately by cash, check, or credit card. Any other arrangements need to be pre-approved by the KGS Manager.

Please continue to donate unique data that is no longer needed to the Kansas Geological Foundation, so this information can pass into the library and be preserved. I also urge all members to reach out,

(continued on page 10)

AAPG ACE and Section Meeting Updates For 2021

ACE 2021 September 26-October 1, 2021
Denver, CO

AAPG MCS October 3-5, Tulsa, OK

Mid-Continent Biennial Field Conference
Postponed until Fall of 2022 Rolla, MO

ADVERTISER'S DIRECTORY

Duke Drilling	<i>page</i> 29
Kansas Geological Foundation	22
Murfin Drilling Company, Inc	29
PARAGON Geophysical Services, Inc	2
Professional Directory	21
Trilobite Testing	6
Walters Digital Library	2

Log in to
Walters Digital Library
At
www.kgslibrary.com

Log in as our guest
and see the Society's Database

A convenient way to see what
you might want to order!

Call or email your order to:

316-265-8676

frontdesk@kgslibrary.com

ADVERTISER'S RATES: 2020

Full Page	B&W	Color
6 issues	\$2,000	\$2,500
3 issues	\$1,080	\$1,325
1 issue	\$480	\$525
1/2 Page		
6 issues	\$1,000	\$1,500
3 issues	\$540	\$825
1 issue	\$225	\$350
1/4 Page		
6 issues	\$600	\$900
3 issues	\$325	\$525
1 issue	\$150	\$250
1/8 Page		
6 issues	\$300	\$500
3 issues	\$175	\$325
1 issue	\$75	\$185
Professional Ad (Business Card)		
6 issues	\$90	\$180

For one-time ads, call Kent Scribner at 316-264-8378

Recent Donations to the KGS Library through the KGF

The Midcontinent Geological Library donated a large (>80,000) scout tickets to the KGF. This set is in 150 three ring binders which will soon be available for reference in the library. The set was probably generated by Tenneco.

Anderson Energy donated Thorton Anderson's completion card set. It is current to May of 2020. It is for sale by the KGF.

Darrah Oil donated files containing approximately 3,800 electric logs and 2,500 drill stem test reports.

Other significant donations of data came from Sondra and R. D. Reber, Kansas Seismic Exchange, Steve Giebler, Roy Knappe, Larry Skelton, Randy Wolfe, Mike Maune, Whiting Oil, and Rupe Oil.

Robert F. Walters Digital Library

Log in as our Guest

username: guest

password: guest

316-265-8676



Let Us Print Your Geo Reports
And Save Your Time For Finding More Oil & Gas
Top Quality Color Printing For Our Membership

Email your files to: kgsorders@gmail.com
The Kansas Geological Society & Library

stay in contact, and encourage each other during these uncertain times. Also consider supporting the Kansas Geological Foundation by becoming a member.

An unofficial “Geo-Breakfast” has started at Spears Restaurant located at 4323 W. Maple Street (west of West Street on Maple) on the First and Third Friday’s of each month from 7:00 am to 9:00 am in their meeting room. Hopefully this gathering will re-energize fellowship among geologists, Fellowship along with the opportunity to see friends and exchange ideas, has suffered during the downturn in the business and the pandemic.

Soon spring will be here to stay and we all can start our gardens and plant outside flowers again. Yes I am hoping for global warming! Everyone please stay safe and find some oil and natural gas.

Brian G. Fisher

An Open Invitation to Young Geologists to Join AAPG

I would like to extend a special invitation to recent graduates and other young geological professionals to join AAPG. There are many young geologists outside the Wichita area that I have never met. They may work out of Great Bend or Hays, Kansas working with smaller oil and gas producers or working on their own as well site geologists. Kansas does have a future for the foreseeable future. The time is now to meet others from larger regional companies to forge a relationship for future employment. Young minds will be needed to replace those retiring and that other bad option.

I joined AAPG late in my career, much to my regret. I now serve voluntarily as a delegate for the Mid-Continent Section representing the Kansas Geological Society.

Respectfully yours,

Wesley D. Hansen Bulletin Editor and AAPG Delegate

Your Company

1/4 page ad

here

The Following Are For Sale

Kansas Completion Cards:
Several sets (call for more information)

Oklahoma Completion Cards

New Mexico Completion Cards

North Dakota Completion Cards

Utah Completion Cards

Microfiche Electric Logs:

Kansas
Oklahoma
Texas

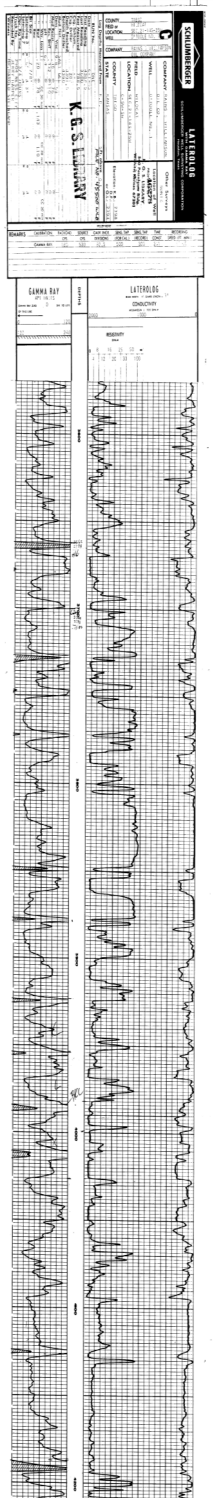
Geological Office Furniture:

- 8-drawer completion card cabinets
- 7-drawer cabinets
- Map cabinets—metal—2 available
- Map racks—different sizes

Call: 316-265-8676

Ask for Ted

*The KGS Library is pleased to
announce a new service*



Creating
LAS files
from our logs
or yours

**\$20.00 per
curve!!**

**Quick
turn-around**

Send us your log file
or tell us which of
ours you would like
converted.

316-265-8676

1996 KGS Chase Group Field Trip Remembered



Dr. Sal Mazzullo sent these photos to me for a trip down memory lane. He led this field trip to NE Kansas to examine outcrops of the Chase Group. Sal tagged some participants in the photos, but couldn't identify everyone. It was nice to see Dr. Walters and Dr. Gries in these photos. I miss them both.

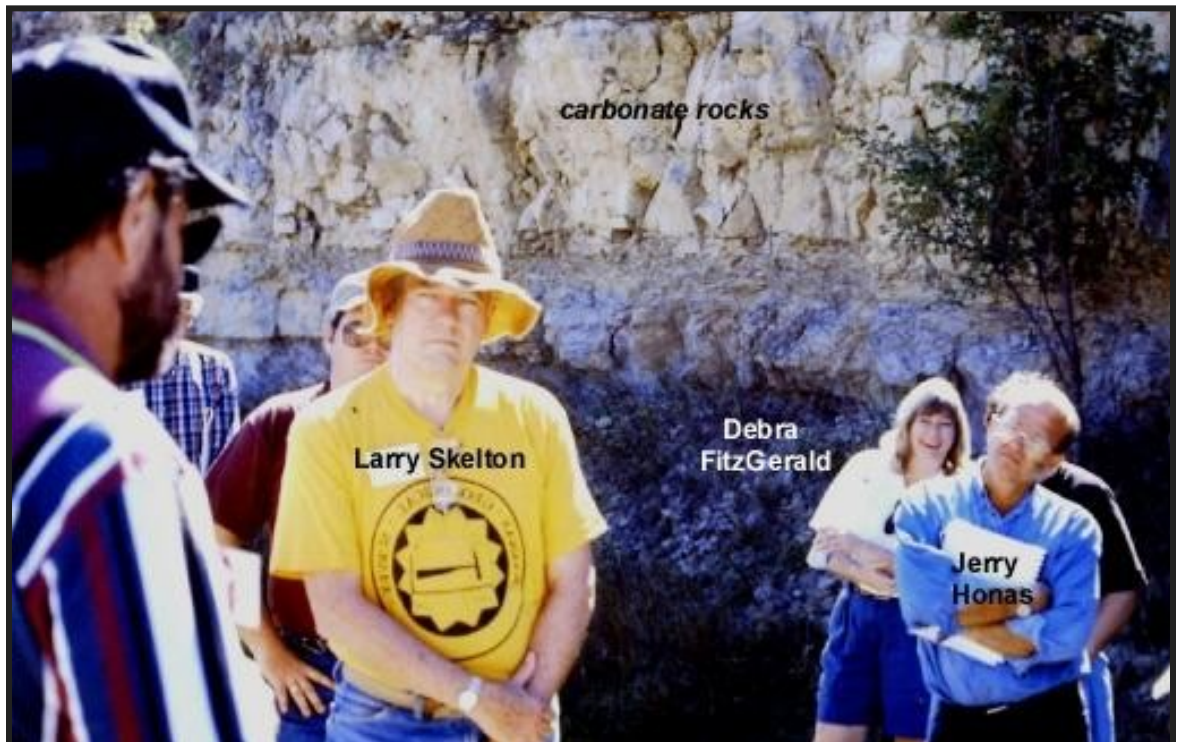
The rest of these characters just got older. Me especially.

Check out these photos and tag others or yourself. I'm looking forward to better healthy times, post covid, when we can all get back out banging on rocks and having a beer to discuss what we have seen and learned.





I think the gentleman in the above right foreground is Tim Hellman. Is that you Tim? My dear old friend, Bob Slamal, is in the upper right. RIP old friend. In the lower photo is Larry Skelton, Jerry Honas and Debra FitzGerald. I haven't had the pleasure of seeing Larry in a longtime. Until the next KGS field trip, Wes Hansen signing off.





Get Your Maps copied at the KGS library

We can scan, copy, and print up to 44" wide

Color or Black & White

Solid Color @ \$4.00/sq. ft.

Line maps with color @ \$3.00/sq. ft.

**Kansas Geological Foundation
Video / DVD Collection**

The KGF has an extensive collection of videos available for check-out at no charge.

Only pay for shipping back.

These are ideal for classroom or general public viewing.

See the web for titles & descriptions
www.kgfoundation.org

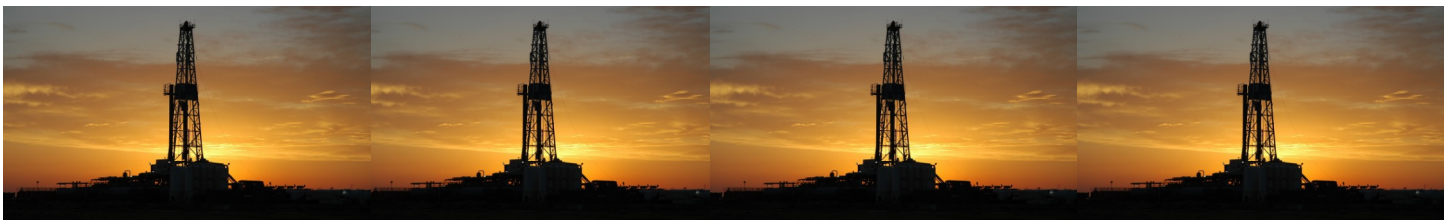
Call 316-265-8676

Ask for Rhonda or Wes to check out videos

Your Company

1/4 page ad

here



Minutes of the KGS Board of Directors Meeting

KANSAS GEOLOGICAL SOCIETY BOARD OF DIRECTORS MEETING

February 9, 2021- Gather at 11:30 for Lunch/Meeting, Caesars Table, 125 N. Market,
Conference Room.

ATTENDANCE & QUORUM:

Officers & Directors: Advisors & Guests

Brian Fisher—President
Garet Dinkel—Secretary
John Hastings—Director
Tyler Sanders—Advisor

Roger Martin—Vice President
Wes Hansen—Library Manager
Tim Lauer—Director
Doug Davis—Guest

Tom Dudgeon—Treasurer
Preston Doll—Director
Doug Louis—Advisor

I. Call to Order - Mr. Fisher called the meeting to order at 12:03 PM

II. President's Statement

-Oil prices continue to creep higher under the Biden Administration. The recent cancelation of the Key Stone Pipeline order and the hold on any new leasing on federal lands by Presidential executive orders are all counterproductive for the future of Americas Energy Independence. I also recently heard on the news that GM plans to only produce electrical cars at year 2035 and carbon neutral by 2040. I shudder to think what else will happen next as I write this statement.

III. Society Activities/Events Update

Upcoming:

-KGS Tech Talk: March 10^h Dr. Hannes Leetaru, Illinois Geological Survey, "Reducing the Risk of Another Texas 2021 by Implementing UNGS, CCUS, CAES, HS, and RTES"

Past:

-KGS Tech Talk: February 24th: Gretchen Gillis, AAPG Pres. Elect: "Making (Ungainly) Strides Toward Team Building"

KGS Tech Talk: February 10th Dr. Anthony Walton, Kansas University, Pool Studies

IV. Approval of January 2021 Minutes

-Mr. Lauer made a motion to approve the January 12, 2021 minutes. Second by Mr. Hastings. The motion passed.

V. Financial Report

-Manager's Report Summary (January 2021) Gross income for January was \$24,461.98. Total expenses were \$49,431.58 for a monthly net loss of \$24,969.60

VI. Old Business

-Membership Survey Report (Attached) from Mr. Lauer

-Survey Questions for Library members have gone out and we have received a sampling back. Email Survey will be completed and sent to all Society members, results not compiled yet

-Mr. Doll Volunteered to compile an information sheet to send out with the survey to inform membership of factors influencing the future Library/Society.

-PPP Loan report from Wes Hansen

-2020 PPE Loan will be within the 2021 Tax year

-Scanning Update from Wes Hanson

- Work is progressing as expected

-Kansas Geological Foundation Update from Brian Fisher

-Dennis Hedke, Kansas Geological Foundation has invited Tyler Sanders and Mr. Fisher to attend a preliminary meeting with Janet Ward, KGF Attorney, to discuss possible modification of the KGF's Articles of Incorporation. This possible change comes about due to the potential for the KGF to arrange for ownership of a building to house paper records, due to expanding influx of contributions from various entities. It was learned that the KGF could own in part or full a building with some limitations, also Dick Jordan attended the meeting to explain the history and relationship of the Foundation and the Library. Among other items discussed were the foundation needed a motion for the KGS to be used as a vehicle for fund raising. Chris Steincamp newly elected to the board suggested a possible building donor that he knew personally as another option. This subject will be discussed further under new business and a motion will be asked for to promptly start initial fund raising.

VI. New Business

-Board heard discussion of the handling of all conversations and negotiations with current landlord. It was decided that no conversation should occur without presence of two board members. All proposals should be in writing.

-Motion to KGF for the support of KGS in their Building Donations Fundraising Program

-Part 1: The Society (KGS) agrees to fully support a project initiated by the Foundation (KGF) in the forming of a fundraising project. The intent of the fundraising project will be to acquire a property to house and preserve the documents of the KGS and KGF. Moved by Mr. Martin, seconded Mr. Doll, passed unanimously

-Part 2: Upon formation of the project by the Foundation (KGF), the KGS will include a \$2,500.00 donation to the KGF to be used for the purpose of startup expenses. Startup expenses are expected to include announcements, advertising, mailing of requests for donations, travel expenses relating to promotion of the project, etc. Moved by Mr. Lauer, seconded Mr. Hastings, passed unanimously.

Part 3: The KGF is requested to match the initial KGS fundraising expenses of \$2,500.00 toward the project. Any funds determined to be in excess of startup expenses can be applied to acquisition and development of the property or returned back. Moved by Mr. Lauer, seconded Mr. Martin, passed unanimously.

-Motion to form building action committee to expedite decision making process in event building opportunities arise and a Full board Quorum cannot be reached by Mr. Martin. Seconded by Mr. Lauer. Passed unanimously.

Committee Members

Roger Martin

Preston Doll

John Hastings

Brain Fisher

Tom Dudgeon

Alternates

Tim Lauer

Garet Dinkel

-Tulsa Geological Society Booth

Discussion was introduced by Mr. Davis that KGS man and fund a booth at fall AAPG MCConvention Oct 3rd to Oct 5th. Mr. Hastings moved that the KGS have a booth at the AAPGMC convention. It was seconded by Mr. Martin, passed unanimously.

VIII. Adjournment - Mr. Davis made a motion to adjourn the meeting, seconded by Mr. Doll. The meeting was adjourned at 1:27 PM. Next meeting will be held March 9th, 2021

Minutes of the KGS Board of Directors Meeting

KANSAS GEOLOGICAL SOCIETY BOARD OF DIRECTORS MEETING

March 9, 2021 – Gather at 11:30 for Lunch/Meeting, Petroleum Club Board Room

ATTENDANCE & QUORUM:

Officers & Directors: Advisors & Guests

Brian Fisher – President

Roger Martin – Vice President

Michel Runnion - KGF President

Garet Dinkel – Secretary

Wes Hansen– Library Manager

Chris Steincamp – KGF V.Pres

John Hastings – Director

Preston Doll –Director

Tyler Sanders - Advisor

Doug Louis – Advisor

Absent

Tim Lauer – Director

Tom Dudgeon – Treasurer

I. Call to Order 12:13 P.M.

II. President’s Statement Oil prices continue to climb higher under the Biden Administration. I like the higher crude oil prices but I am in sticker shock when I fill my truck. My solution I now fill truck at ½ mark to save money from the quickly rising gasoline prices! Also I would like to introduce our new Kansas Geological Foundation President: Michel Runnion

III. Society Activities/Events Update:

KGS Talk March 10th Dr. Hannes Leetaru, “Reducing the Risk of Another Texas 2012” Illinois Geological Survey, (Energy Storage)

IV. Approval of February 9th, 2021 Minutes

-Mr. Roger Martin made a motion to approve the February 9th 2021 minutes, Seconded by Mr. Hastings, the motion passed unanimously.

V. Financial Report

-Manager's Report Summary (February 2021) Gross income for February was \$31,065.65. Total expenses were \$50,206.32 for a monthly net loss of \$19,140.67. For a \$44,110.27 cumulative loss this year
The second PPP loan of \$46,202 was received in March
-PPP loan forgiveness for first loan has not been received
Discussion regarding PPP employee retention credits

VI. Old Business

-Survey Questions for Library members have gone out and we have received a sampling back. Email Survey will be completed and sent to all Society members, results not compiled yet, update from Wes Hansen and/or Tim Lauer. – No Update

-PPP Loan update. We voted to have Cindy McSwain submit PPP application; I recently signed additional documents as Society President. I understand that we have now received funding. Update and details - Wes Hansen. – No update

-Scanning update and progress goals, Wes Hansen.
-16,233 Logs scanned 24.9% new additions to collection
-Board heard discussion about file size concern
-Server was down due to damage, and has been repaired

-Geologist Licensing – Kansas State Board of Technical Professions. Doug Lewis. No Update

-KFG fund raising status for a new building.-

Mr. Chris Steincamp (KGF board member) is going to receive, copy and review early KGF documents from Janet Ward who is the KGF attorney. Chris is wanting to understand early relationships and agreements between the two entities. This fund-raising subject was discussed at the foundation meeting last month and it was decided that the foundation would wait for a legal opinion from Janet Ward before committing and starting any fund raiser activities for a new building.

- On Wednesday February 3rd Dr. Ross, submitted a rental proposal for continuing building lease.

VII. New Business

Building Search, Mr. Tyler Sanders

- Building committee have continued to look for:
 1. Buildings 15,000 to 20,000 square feet. This allows for present volume and committed future donations as well as scanning activity and possible sub-lease income (until additional space is needed).
 2. An office / warehouse configuration where total climate control is not needed except to the extent to control humidity and comfort in office areas.
 3. Located in industrial zoned areas where property tax is approx. 1/2 of commercial or retail zoned areas (high visibility / high traffic areas not essential).
 4. In reasonably good condition with no major repairs or remodels needed for immediate move-in. (purchase price adjusted accordingly).
 5. Purchase price in the range of \$23 to \$30 per SF. (note: suitable properties in reasonable condition in this price range are not common and draw immediate interest from competition). (The comparison used on commercial buildings is the price per sq. ft.)
- 6. In 2020, (4) 'suitable' properties were located. (2) Were sold before KGS could meet to approve a possible

Cont. on page 20

In Memoriam

KGS and Industry Members Lost in 2020 and 2021

2020

**Lloyd K. Parrish, Jr.
Bruce A. Reed
Bob Scull
Thornton E. Anderson
Ronald S. Schraeder
Billy Gene Ree
Philip L. Hart**

2021

**Lee Banks
Richard “Dick” Smith**

Cont. from page 19

purchase, (1) was sold at auction higher than KGS approved, (1) is still on the market but priced too high in comparison.

-Another possibility would be for the foundation to receive a suitable building donation in whole or in part for the 501 (C) (3) income tax write offs, for year 2021.

-Continued discussion of Preston’s first pass at the infographic, and the financial models associated with the member’s information

-Next meeting will be held April 13th, 2021

VIII. Adjournment

Mr. Hastings made a motion for adjournment, Seconded by Mr. Preston Doll. Motion passed unanimously.



PROFESSIONAL DIRECTORY

Kirk Rundle
Consulting Geophysicist

3D Seismic Design, Acquisition to Processing QC.,
Interpretation and Analysis, Subsurface Integration
7340 W. 21st. N., Ste. 100
Wichita, Kansas 67205

Office: 316-721-1421 Fax: 316-721-1843

Email:kirk@rundlegeo.com

Covey - The Well Watchers

One Thousand Wells and Counting"

Curtis E. Covey Wellsite Petroleum Geologist

Gas Trailer Cell: 316-217-4679 Office: 316-776-0367
Email: wellsitgeol@gmail.com 6548 Bedford Circle
Derby, Kansas 67037



GRAVITY OIL LLC **ELI J. FELTS**
CONSULTING PETROLEUM GEOLOGIST

316.204.5059 E.J.FELTS47@GMAIL.COM

- VERTICAL & HORIZONTAL WELL-SITE SUPERVISION
- PROSPECT GENERATION & EVALUATION
- WELL-LOG ANALYSIS
- DIGITAL MAPPING SERVICES & GEOLOGICAL REPORTS
- KCC & COMPLIANCE SPECIALIST
- PROFESSIONALLY INSURED

COMPETITIVE PRICING & STATE OF THE ART SERVICES YOU CAN COUNT ON
CALL TODAY & RECEIVE (1) FREE DAY WELL-SITE TO NEW CLIENTS

WESLEY D. HANSEN

Consulting Geologist

Well site Supervision • Geologic Studies
212 N. Market, Ste 257
Wichita, Kansas 67202
Office/Mobile: (316) 772-6188
whansen4651@sbcglobal.net
40 Continuous Years in the Kansas Oil Patch



JOHN H. MORRISON, III
President

www.IOGsi.com Phone: 316-263-8281
226 N. Emporia Ave Fax: 316-263-0874
Wichita, Kansas 67202 Email: jmorrison@iogsi.com

ROGER L. MARTIN

Independent Petroleum Geologist

200 E 1st St, Ste 405, Wichita, KS 67202

Cell: 316-833-2722 Office: 316-250-6970
KS Field Cell: 316-655-1227

Email: rogermartingeo@yahoo.com

ALFRED JAMES III

Petroleum Geologist

Kansas - Colorado - Utah

P.O. Box 218 Augusta, KS 67010

SIPES # 1111

Office: 316 648-2821

james.alfred21@yahoo.com

M. ((Brad))ford Rine, Geologist

Licensed, Registered, Certified

PROSPECT EVALUATION PROSPECT ORIGINATION
WELL-SITE SUPERVISION DRLG/COMPL CONSULTATION
RESERVOIR STUDIES PROPERTY EVALUATION
EXPERT TESTIMONY BANJO PICKER

100 South Main
Suite #415
Wichita, Kansas 67202

Email: rinemb@sbcglobal.net
Office & Cell: (316) 250-5941

**Your business card ad
Could be right here
For only \$90/year**

MELLAND ENGINEERING, INC.

Petroleum Engineering & Geological Consulting

James E. Melland, P.E., P.G.

President

Office: (620) 241-4621 Fax: (620) 241-2621

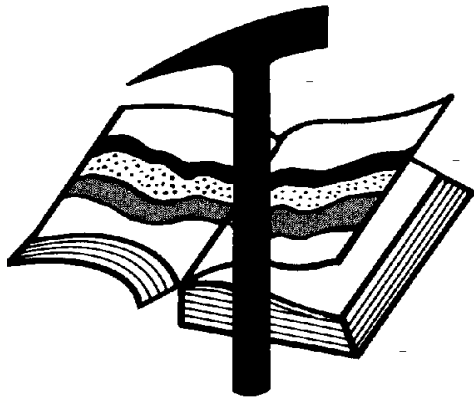
jamesm@mellandengineering.com

www.mellandengineering.com

P.O. Box 841, McPherson, KS 67460

**Your business card ad
Could be right here
For only \$90/year**

**Your business card ad
Could be right here
For only \$90/year**



Kansas Geological Foundation

Web Site: www.kgfoundation.org

**212 North Market
Wichita, Kansas 67202**

A not-for-profit educational and scientific corporation

GOALS:

- promote geology and earth science
- preserve geological records
- establish memorials and endowments
- support field trips and seminars
- financial aid and grants to students

PLEASE HELP SUPPORT THE FOUNDATION

Kansas Geological Foundation Services

The Kansas Geological Foundation provides the following services as a part of the organization's commitment to educate the public regarding earth science.

Speaker's Bureau

A list of speakers available to talk about various aspects of geology may be obtained by contacting Wes Hansen at the KGS Library, 265-8676. This service is free to the public.

DVD/Videotape Library

The KGF maintains a DVD & videotape library focused primarily on the various fields of earth science. These tapes may be checked out without charge by the public. To obtain a list of tapes, please contact the KGS Library, 212 N. Market, Ste. 100, Wichita, KS 67202, or call Wes Hansen at 265-8676.

The Kansas Geological Foundation was founded in March, 1989 as a not-for-profit corporation under the guidelines of section 501(c)(3) of the tax code to provide individuals and corporations the opportunity to further the science of geology. It is dedicated to providing charitable, scientific, literary and educational opportunities in the field of geology for the professional geologist as well as the general public.

KGF can receive in-kind donations through which the donor may receive a tax deduction. Of equal importance, the KGF provides the financial resources to sort, process and file this data at the KGS library. If you have a donation to make, please contact the KGF at 265-8676.

Your tax-deductible membership donation helps to defray the cost of processing donations and to support public education programs about the science of geology. Annual membership begins at \$50.00 per year. Donations of \$100.00 or more are encouraged through the following clubs:

Century Club	\$ 100 to \$ 499
\$500 Club	\$ 500 to \$ 999
Millennium Club	\$1000 to \$5000
President's Club	\$5000 and over

Kansas Geological Foundation

Cornerstone

Kansas Geological Foundation News

Spring 2021 KGF Scholarship Recipients

Name	University	Scholarship	Amount
Nicholas Ferry	University of Kansas	Knighton Family Scholarship	\$1000
Brynn Wooten	Fort Hays State Univ.	KGF Scholarship	\$500
Riley Sanford	Fort Hays State Univ.	KGF Scholarship	\$500
Austin Bruner	University of Kansas	KGF Scholarship	\$500
Sarah Lamm	Kansas State University	KGF Scholarship	\$500
Alexandra Staub	University of Kansas	KGF Scholarship	\$500
Emma Klein	University of Kansas	KGF Scholarship	\$500
Alireza Roustazadeh	Kansas State University	KGF Scholarship	\$500

KGF Grants

Master's Thesis Grant to Ms. Zijie Gao
University of Kansas
\$750



Kansas Geological Foundation News

Students: The KGF awards scholarships each December and May. Check with your department chairs for applications. You must submit complete applications by the deadline.

Scholarship Applications for the Fall semester will be due by May 1, 2021.

Grants to help with research on Kansas related geology are also considered for aid.

If you are in the KGS Library and see Ted Jochems or any of the integrators, give any of them a great big thanks for their efforts in continuing the tedious process of examining, scanning and integrating new logs and geologist's reports etc. into our library and the WDL.

KGF Officers and Board Members

President - Michel Runnion
Vice President - Chris Steincamp
Treasurer - Corey Baker
Secretary - Debra FitzGerald

Board Members

Dave Callewaert **Mark Galyon**
Ryan Dixon **Mark Thompson**
Will Darrah

Scholarships - Maurice Korphage
Publicity - Wes Hansen

The Kansas Geological Foundation Needs You!



By permission

The KGF provides the financial resources to sort, process and file, in-kind donations of geological data at the KGS library. Due in large part to the KGF this unique and rare well of information is being made available to all. Please consider telling your company management and colleagues about the benefits of a library that continues expanding in part because of the KGF.

We very much value and need your financial support.

Integration Update as of December, 2020

From 01 January to 31 December, 2020, 24,581 well documents were examined by the integrators. 5,068 (20.6%) were new documents for the Walters Digital Library. 3,285 documents were re-scanned to replace poor existing digital images. The two integrators were working from home during March through June due to the Covid-19 quarantine. They could compare donated documents to the WDL from home, but could not scan documents. The scanning has now been caught up.

PLEASE SUPPORT THE INTEGRATION PROJECT BY DONATING FINANCIALLY TO THE KANSAS GEOLOGICAL FOUNDATION

Submitted by Ted Jochems

Thank you to the Current KGF Members

The Kansas Geological Foundation gratefully acknowledges the generous contributions from the following Individual and Corporate Donors during our yearend 2020 fundraising. From the Basic Membership up through the Millennium Class Members, we are deeply appreciative of your generosity in one of the most challenging times in our history. We wish you every success in the years and decades ahead.

Millennium Club

Steve Frankamp

Richard Jordan

Murfin Drilling Company, Inc.

500 Club

Don Beauchamp
Paragon Geophysical Services, Inc.
John O. Farmer, Inc.
Gore Oil Company
Hedke Geoscience Consulting, LLC
Derry Larson

Roger McCoy
Herman L. Loeb LLC
K & N Petroleum, Inc.
Bob O'Dell
Tom Pronold
Larry Richardson

Kirk Rundle Consulting, LLC
William H. Shepherd
Northern Lights Oil Company
Shakespeare Oil Company, Inc
Berexco, LLC

Century Club

C.W. Todd Aikins III
Val Energy, Inc.
Tomco Oil, Inc.
Holly Burke
Dave Callewaert
Scott Corsair
Marshall Crouch III
James Daniels
Jene C. Darmstetter
Red Oak Energy, Inc
Dixon Operating Co., LLC
David Doyel

W. Bryce Bidleman
Debra FitzGerald
Larry Friend
Wes Hansen
Alfred James III
George R. Jones
Kenneth M. LeBlanc
Chellie Mazzullo
RJM Company
Terra Firma Exploration
Bill Petersen

Sunrise Oilfield Supply, LLC
M. Brad Rine
A. Scott Ritchie
Michel Runnion
Richard J. Saenger
Mark Shreve
Trilobite Testing, Inc.
Richard D. Smith†
Chris Steincamp
Fred Stump
Darrel G. Walters

Basic Membership

Phil Askey
Briscoe Petroleum LLC
Raul Brito
Dean Britting
William E. Chew
Kent Crisler
Alan DeGood
Martin Dubois
Sarlan Resources Inc.
Doug Frickey
Harvey Gough
Tim Hellman

F. Judson Hipps
Jerry Honas
Ronald L. Irion
Ted Jochems
Mike Kidwell
Steve Kirkwood
M.L. Korphage
Larson Engineering, Inc.
William C. Manthey III
Mikeal Maune
Sal Mazzullo
Jon F. Messenger

Rusty Mourning
Quincy Ridge Petroleum, Inc.
Troy Phillips
John Rose
Bob Schreiber
Stewart Producers, Inc.
Robert Stolzle
Mark Thompson
John Washburn
Midco Exploration
JRZ Enterprises, LLC

Kansas Geological Foundation Memorials

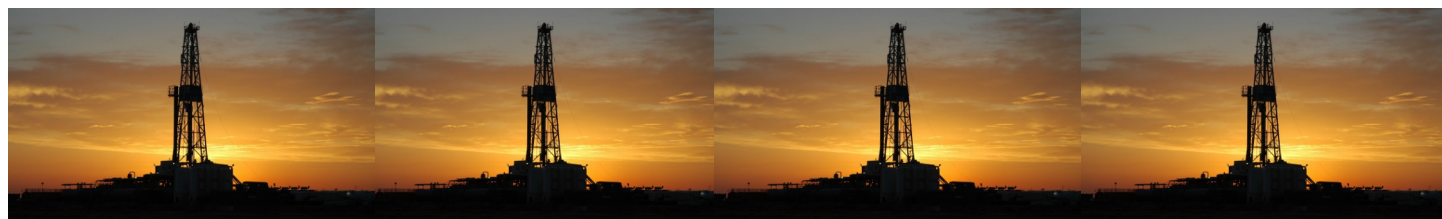
KGS Member	Date Deceased	Memorial Established
Dan Bowles	09/89	1990
John Brewer	10/89	1990
George Bruce	08/89	1990
Robert Gebhart	01/90	1990
Ray Anderson, Jr.	11/90	1990
Harold McNeil	03/91	1991
Millard W. Smith	08/91	1991
Clinton Engstrand	09/91	1991
M.F. "Ted" Bear	10/91	1991
James & Kathryn Gould	11/91	1991
E. Gail Carpenter	06/91	1993
Benton Brooks	09/92	1992
Robert C. Armstrong	01/93	1993
Nancy Lorenz	02/93	1993
Norman R. Stewart	07/93	1993
Robert W. Watchous	12/93	1993
J. George Klein	07/94	1994
Harold C.J. Terhune	01/95	1995
Carl Todd	01/95	1995
Don R. Pate	03/95	1995
R. James Gear	05/95	1995
Vernon Hess	06/95	1995
E. K. Edmiston	06/95	1995
Jack Rine	07/95	1995
Lee Cornell	08/95	1995
John Graves	10/95	1995
Wilson Rains	10/95	1995
Heber Beardmore, Jr.	09/96	1996
Elmer "Lucky" Opfer	12/96	1996
Raymond M. Goodin	01/97	1997
Donald F. Moore	10/92	1997
Gerald J. Kathol	03/97	1997
James D. Davies	08/88	1997
R. Kenneth Smith	04/97	1997
Robert L. Dilts	05/97	1997
Delmer L. Powers	06/72	1997
Gene Falkowski	11/97	1997
Arthur (Bill) Jacques	01/98	1998
Bus Woods	01/98	1998
Frank M. Brooks	03/98	1998
Robert F. Walters	04/98	1998
Stephen Powell	04/98	1998
Deane Jirrels	05/98	1998
William G. Iversen	07/98	1998
Ann E. Watchous	08/98	1998
W.R. "Bill" Murfin	09/98	1998
Donald L. Hellar	11/98	1998
Joseph E. Rakaskas	01/99	1999
Charles W. Steincamp	02/99	1999
Robert and Betty Glover	10/96	1998
Howard E. Schwerdtfeger	11/98	1999
W. W. "Brick" Wakefield	03/99	1999
V. Richard Hoover	01/00	2000
Warren E. Tomlinson	01/00	2000
James A. Morris	01/00	2000
Eric H. Jager	03/00	2000
Kenneth W. Johnson	03/00	2000

Kansas Geological Foundation Memorials

KGS Member	Date Deceased	Memorial Established
Dean C. Schaake	03/00	2000
Fred S. Lillibridge	05/00	2000
Jerry A. Langrehr	07/00	2000
Clark A. Roach	07/00	2000
Floyd W. "Bud" Mallonee	10/00	2000
Ralph W. Ruuwe	09/00	2000
Robert L. Slamal	02/01	2001
Jerold E. Jespersen	06/01	2001
William A. Sladek	06/01	2001
Harlan B. Dixon	06/01	2001
Edward B. Donnelly	08/01	2001
Richard P. Nixon	02/02	2002
Robert W. Frensley	12/01	2002
Gerald W. Zorger	01/02	2002
Don L. Calvin	03/02	2002
Claud Sheats	02/02	2002
Merle Britting	2002	2002
Harold Trapp	11/02	2002
Donald M. Brown	11/02	2003
Elwyn Nagel	03/03	2003
Robert Noll	09/03	2003
Benny Singleton	09/03	2003
Jay Dirks	2003	2003
J. Mark Richardson	02/04	2004
John "Jack" Barwick	02/01	2004
Richard Roby	03/04	2004
Ruth Bell Steinberg	2004	2004
Gordon Keen	03/04	2004
Lloyd Tarrant	05/04	2004
Robert J. "Rob" Dietterich	08/96	2004
Mervyn Mace	12/04	2004
Donald Hoy Smith	04/05	2005
Richard M. Foley	06/05	2005
Wayne Brinegar	06/05	2005
Charles B. Moore	09/96	2005
Jack Heathman	05/06	2006
Charles Kaiser	09/06	2006
Rod Sweetman	08/06	2006
Karl Becker	10/06	2006
Frank Hamlin	10/06	2006
Marvin Douglas	12/06	2006
Robert W. Hammond	04/07	2007
Eldon Frazey	04/07	2007
Pete Amstutz	05/07	2007
Charles Spradlin	05/07	2007
Donald R. "Bob" Douglass	09/07	2007
Vincent Hiebsch	11/07	2007
Glen C. Thrasher	03/08	2008
Peg Walters	06/08	2008
Theodore "Ted" Sandberg	07/08	2008
James Ralstin	11/08	2008
Earl Brandt	04/09	2009
Walter DeLozier	05/09	2009
Don D. Strong	1/10	2010
John Stone	02/10	2010

Kansas Geological Foundation Memorials

KGS Member	Date Deceased	Memorial Established
Craig Caulk	03/10	2010
Joseph E. Moreland, Jr.	03/10	2010
Gene Garmon	03/10	2010
James F. Dilts	05/10	2010
Jerry Pike	05/10	2010
Donald Hollar	06/10	2010
Delbert Costa	08/10	2010
John Tanner	08/10	2010
William (Bill) Owen	09/10	2010
Harold (Hal) Brown	10/10	2010
Edmund G. Lorenz	11/10	2010
Thomas E. Black	05/11	2011
Wayne E. Walcher	07/11	2011
Henry F. Filson	07/11	2011
Thomas Ray	07/11	2011
Edgar E. Smith	09/11	2012
Marilyn Messinger	06/13	2013
Micheal Mitchell	09/13	2013
Orvie Howell	11/13	2013
James Thompson	11/13	2013
Dick Rowland	09/13	2014
Robbie Thompson	12/13	2014
Kris Kennedy	04/14	2015
Annette Hedke	02/15	2015
James Devlin	04/15	2015
Robert Gensch	09/15	2015
Jerald Rains	05/16	2016
Max Houston	05/16	2016
Robert "Gus" Messinger	01/17	2017
Jimmy Wayne Gowens	04/17	2017
Walter H. Martz Jr.	01/18	2018
Gary Sandlin	01/17	2018
Douglas McGinness	12/16	2018
Allen Siemens	06/18	2018
Ernest R. "Ernie" Morrison	09/18	2018
E. G. "Elbie" McNeil	12/18	2018
Robert Maxwell (Bob) Euwer	1/19	2019
J. Fred Hambright	12/18	2019
W. Lynn Watney	7/19	2019
Byron Hummon	12/18	2019
Mike Raymond	11/19	2019
James Roberts, Jr.	3/19	2019
Herb Johnson	8/19	2020
Lloyd Parrish	2/20	2020
Bruce Reed	5/20	2020
Bob Scull	6/20	2020
Thornton E. Anderson	7/20	2020
Don Shawver	12/16	2020
Phillip Hart	12/20	2021



18 Drilling Rigs

To depth of 9,500 ft.



WESTERN KANSAS
SOUTHERN NEBRASKA
EASTERN COLORADO

For contract information contact:

William Murfin
Drilling Manager

316-258-8888 (Direct)
316-267-3241 (Main)

250 N. Water, Ste. 300
Wichita, KS 67202

The logo for Duke Drilling Company features the word "DUKE" in large, bold, black letters at the top. Below it, a silhouette of a drilling rig is centered. The words "DRILLING" and "COMPANY" are written in bold, black letters on either side of the rig. Below the rig, the text "ROTARY DRILLING CONTRACTOR" is written in a smaller, bold, black font. At the bottom, contact information is provided in two columns: "620 Hubbard PO Box 823 Great Bend, KS 67530 Phone 620-793-8366" on the left and "100 S. Main, Ste. 410, Wichita, KS 67202 Phone 316-267-1331 Fax 316-267-5180" on the right.

Your Company

1/8 page ad here

BULLETIN CONTENT POLICY

Effective January 1, 2018, only ads for service companies and geologists offering their services will be permitted in the KGS Bulletin. Furthermore, only content of geologic interest or official KGS functions (technical talks, annual banquet, golf tourney, picnic etc.) will be permitted in this bulletin. This policy is in keeping with maintaining a professional standard for this publication. Any interpretation of this policy rests solely with the editor of this bulletin.



AAPG Needs You!

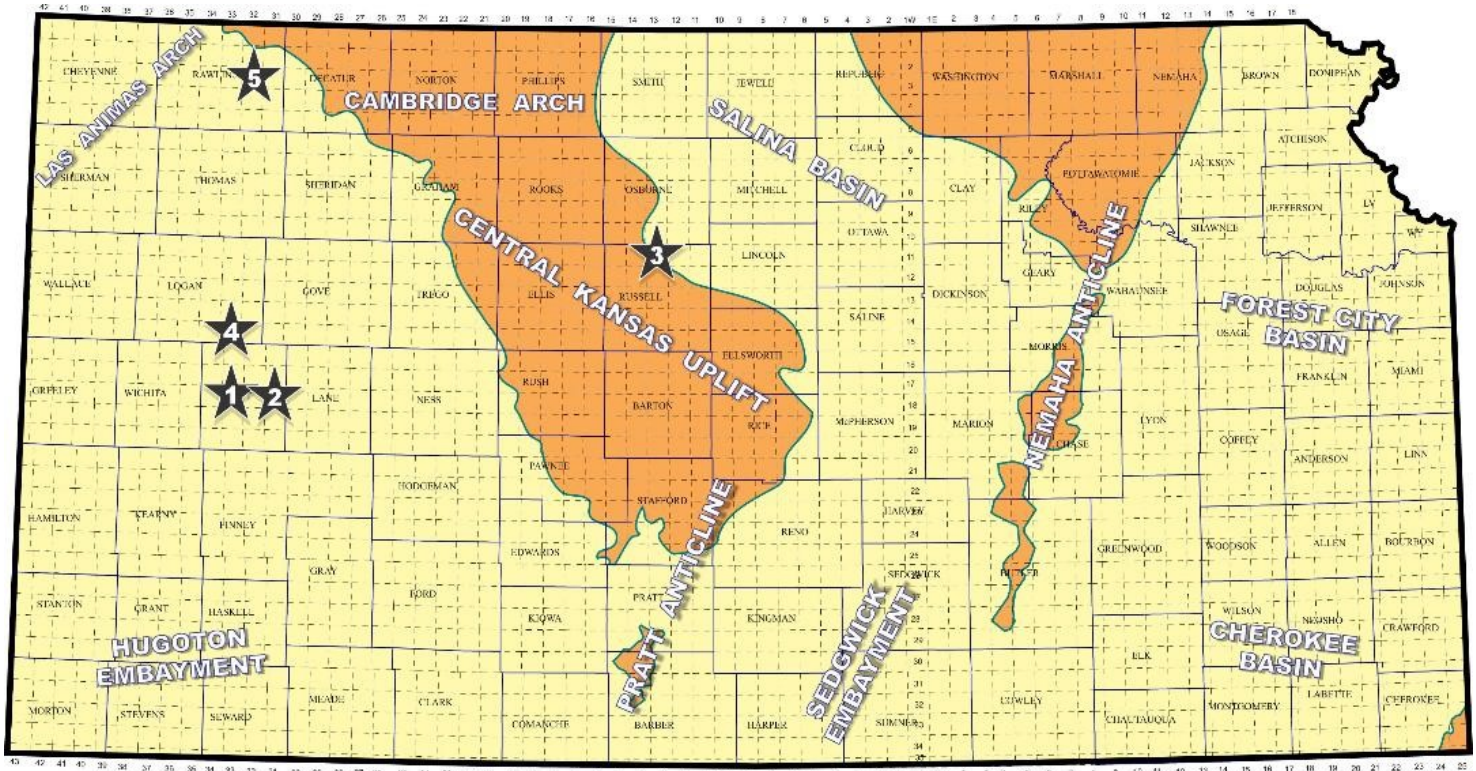
Professional geoscientists, share your world!

The Mid Continent Section has 17 AAPG Student Chapters, but only 3 Visiting Geoscientists...which makes it almost impossible to have a professional geoscientist visit to each school at least once a year or even once every two years. The aim of AAPG's program is to give students a flavor of a professional life in energy resources. It also hopes to encourage dialog between industry and academia.

To be a Visiting Geoscientist bearing the AAPG flag, you are asked to have at least 5 years of experience and make at least one visit per year to a university. It can be a school with an AAPG Student Chapter, or a college/university without one. Your choice.

The Mid Continent schools with Student Chapters are: Missouri University, Fort Hays State University, Iowa State University, Kansas State University, Missouri State University, University of Nebraska, Northwest Missouri State University, Oklahoma State University, University of Oklahoma, University of Arkansas, University of Iowa, University of Kansas, University of Missouri, Columbia University of Tulsa and Wichita State University.

Contact Robbie Gries, co-Chair VGP committee, Denver, if you are interested in learning more. rrgries@aol.com



Map courtesy of Marc Summerville

- 1) Darrah Oil Company, LLC, Wichita, KS, has discovered new oil reserves in the Marmaton (Altamont Limestone) formation with the successful completion of the #1-5 B4US well in Scott County. The wildcat well was drilled to a total depth of 4,900 ft. at location in approximately SW SE SW in section 5- T18s- R33W. Murfin Drilling's Rig #21 served as contractor. The well was placed on pump on January 27, 2021, about one and one-half miles north and four miles west of Scott City, KS. Well site lies two and one half miles southeast of a Marmaton well that established the Prime Pork North Field in section 2- T18s- R34W in March, 2014. American Warrior opened the field with a 60 BOPD producer from a depth around 4,506 ft. Information on Darrah's latest discovery remains confidential. The new field has not been named. (Ref: API 15-171-21265)

- 2) BEREXCO, LLC, Wichita, KS, has added three new productive pay zones within the Beckley Field in Scott County. The field previously had produced oil from the Lansing-Kansas City and Cherokee formations and produced nearly 123,000 bbls of crude since its discovery in 1971 by Thunderbird Drilling and Petroleum Resources. BEREXCO's #3-18 Huseman, spotted in approximately NE SE NW in section 18- T18s-R31W, has been completed with commingled production from not only the Cherokee formation, but also the Pleasanton, Marmaton and Mississippian zones. Details remain confidential. Southwind Drilling tools bottomed the well at a total depth of 4,660 ft. This makes the fourth producer in the field, which is situated about six miles east of the town of Scott City, KS. (ref: API 15-171-21269)

- 3) Castle Resources, Inc., Russell, KS, has successfully washed down and completed the #1 Brown OWWO to establish the new Where's Waldo oil field in Russell, Kansas. Located approximately SW NE SW in section 3- T11s- R13W, the remote wildcat well is producing 20 BOPD, no water, from Lansing A zone perforations at a depth of 2980-2990 ft. Production commenced on January 6, 2021. Total depth of the 2009

dry hole is 3625 ft. A previous drill stem test that covered the Lansing A and B zones showed 200 ft. gas in pipe ahead of 40 ft. of gas cut mud with shut-in pressures of 1040 to 1092 psi. Nearest active production lies nearly seven miles to the northeast in the Sigle Northwest oil field in section 8- T10s- R12W in Osborne County. Castle's new field is located a little over two miles east of the town of Waldo, KS. (ref: API 15-167-23566)

4) Cobalt Energy, LLC, Wichita, KS, has extended the Touchstone West Field in Logan County with the completion of an infield wildcat discovery on the western flanks of the pools new boundaries. Last December, the #1-18 McDaniel Trust was drilled to a total depth of 4,603 ft. at site in approximately SE NW NE in section 18- T15s- R33W. The well is producing an undisclosed amount of oil from the Marmaton formation. It was put on pump on February 4, 2021. The previously one-well Touchstone West Field was established by Stelbar Oil Corporation in August, 2012 with the completion of the #1-17 Wray for 45 BOPD in the NW/4 of section 17. The Touchstone West Field has produced over 37,000 bbls of oil from the Marmaton at 4233-4244 ft. and the Cherokee (Johnson Zone) at 4446-4452 ft. Field are is located about ten miles south and eight miles east of Russell Springs, KS.

5) Chizum Oil, LLC, Wichita, KS, has discovered Lansing - Kansas City oil deposits at a rank wildcat well located over two miles northwest of closest known production in the Norman Field (2015) in Rawlins County. The 1-34 Walker, spotted in approximately SE NE NW in section 34- T3s- R32W, is producing an undisclosed amount of crude from the Lansing G zone at a depth from 4080 to 4084 ft. Rotary total depth is 4640 ft. The well also recovered good shows of oil and gas in the Cherokee Sand at 4428 ft, but the pay remains untested behind pipe. The new unnamed oilfield is located about three miles north and east of the town of Achilles, Kansas. (ref: API 15-153-21254)

KGS members please check your files

Fellow KGS members, please remember to check your files of elogs and geologist reports against the KGS paper library and the WDL before discarding them. I was contacted by John Morrison recently about a well I watched years ago that had some tops and DST info missing from his completion card. I took pics from my geo report of tops and DST results and sent them to John to update his card data. If I was to go through all of my files, I'm sure I have many logs and geo reports that are not in the files of either the KGS paper or the WDL. Before I hang things up in my career, I vow to go through all of my data and get it donated and scanned.

KCC rules allow an operator to hold information confidential for a two year period. As long as the well in question is older than the two year period, one can release the data. If one has concerns about alienating a client, of course, feel free to ask for permission.

Wes Hansen

CHANGE SERVICE REQUESTED

KGS BULLETIN
 May—June 2021

May 2021

Sun	Mon	Tue	Wed	Thu	Fri	Sat
						1
2	3	4	5 Tech Meeting	6	7	8
9	10	11 KGS Board	12	13	14	15
16	17	18	19 KGF Board	20	21	22
23	24	25	26 Tech Meeting	27	28	29
30	31 Memorial Day KGS Library Closed					

June 2021

Sun	Mon	Tue	Wed	Thu	Fri	Sat
		1	2 Tech Meeting	3	4	5
6	7	8 KGS Board	9	10	11	12
13	14	15	16	17 Tech Meeting	18	19
20	21	22	23	24	25	26
27	28	29	30 Tech Meeting			